

# MANITRANSIT ■ TMT 2020 S

## Rough-terrain telescopic truck-mounted forklift

- Nominal maximum 2000 kg
- Excellent ratio weight/capacity
- Ultra-Compact



## TMT 2020 S



### CAPACITY

Maximum Capacity .....2000 kg



### LIFTING

Maximum lifting height .....2980 mm  
Maximum front reach .....1030 mm  
Side-shift .....150 mm



### ENGINE / TRANSMISSION

Type .....KUBOTA (27 HP)  
Hydrostatic transmission  
Driving wheels .....3



### TYRES

Front tyres .....26x12-12 10 PR  
Rear tyre .....26x12-12 10 PR



### DIMENSIONS

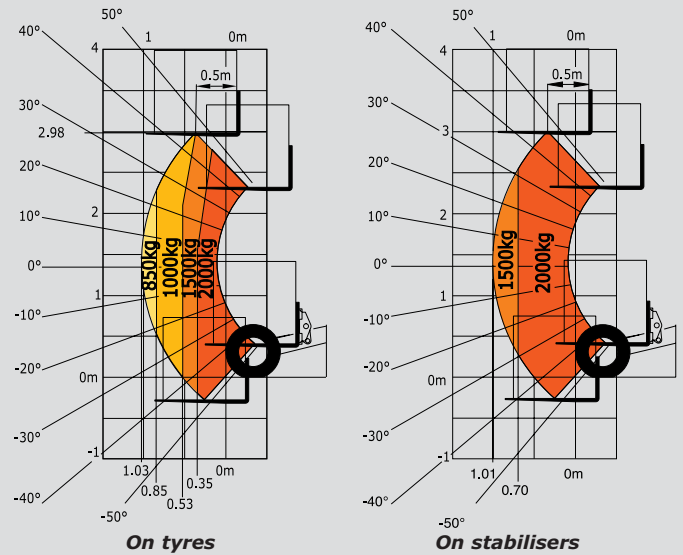
Width .....2449 mm  
Height .....2159 mm  
Overhang (in transport position) .....1170 mm  
Weight (without equipment) .....1911 kg

### IN STANDARD

ROPS/FOPS Cab + load indicator  
FNR joystick  
Waterproof dashboard and electric connections  
Stabilisers  
Differential lock

### OPTIONS

Full mounting kit  
Load repartition calculation (on request)  
Rearview mirrors  
Rotating beacon  
Road lights  
Working lights and reversing light  
Load backrest



## BOOM



Enables you to offload your lorry with the best visibility ever.

## NEW FNR JOYSTICK



This new « boom control » joystick now integrates the « reversing shift » function : the driver can keep one hand on the steering wheel and one hand on this joystick to operate any movement. Time saving and much better driving position.

## STABILISERS



The 2 front stabilisers of the TMT 2020 S give more lifting capacity, especially when the boom is fully extended at maximum reach.



This publication in no way constitutes an offer and the company reserves the right to alter specification without prior notice.  
The MANITOU models presented in this brochure can be supplied complete with optional equipment attachments.  
IMPORTANT : All regulations relating to vehicles apply to vehicles equipped with truck-mounted forklifts.

MANITOU BF SA

B.P. 249 - 44158 Ancenis Cedex - France  
Tél. : 33 2 40 09 10 11 / Export Department Fax : 33 2 40 09 10 97  
www.manitou.com

700304EN - Doc BE 312/Ind. B

